

Mini Blade Fuse Boxes

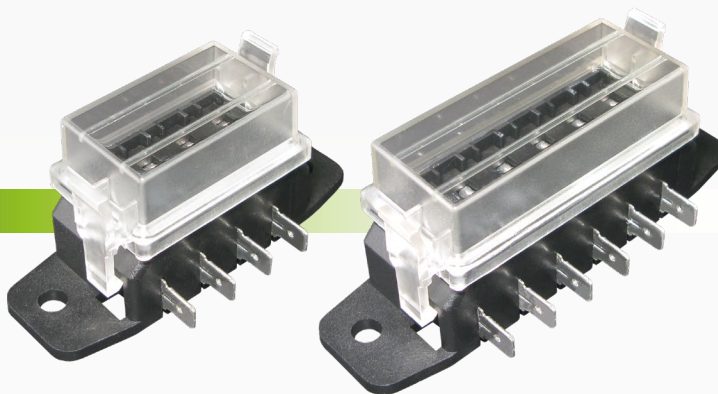
#FB19

www.qvee.com.au

DESCRIPTION

Fuse box to suit mini blade fuses.

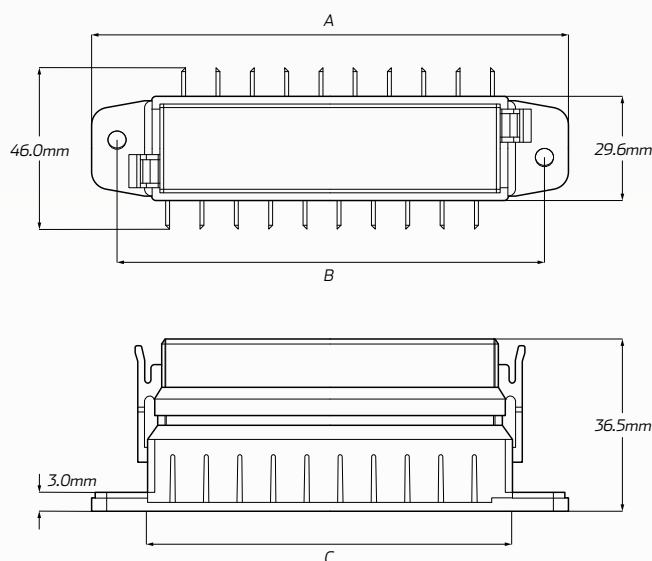
Features a transparent cover and 6.3mm blade terminal connections. Amperage rating of 15 Amps per circuits.



TECHNICAL SPECIFICATIONS

- Maximum voltage of 32V DC
- Fuses are not included
- Bronze tin plated terminals
- Available in 4/6/8/10 circuit
- Nylon PA 66 Fibre base with polycarbonate cover

DIMENSIONS



Please refer to table below for full measurements

Voltage	• 32 Volt DC max
Current Rating	• 15A per circuit
Base Material	• Nylon PA 66 + 15% fibre
Base Colour	• Black
Cover Material	• Clear polycarbonate (included)
Contact Material	• Phosphor bronze tin plated (6.3mm)
Terminals to Suit	• Mini blade fuses (not included)

PART NUMBERS

Part Number	No. of Fuses	Max. Current (Block)	Dimensions (A x B x C)	Descriptions
FB1904	4 fuses	30 Amp max	80mm (A) x 65mm (B) x 49mm (C)	4 way mini blade fuse box with cover
FB1906	6 fuses	45 Amp max	100mm (A) x 85mm (B) x 69mm (C)	6 way mini blade fuse box with cover
FB1908	8 fuses	60 Amp max	120mm (A) x 105mm (B) x 89mm (C)	8 way mini blade fuse box with cover
FB1910	10 fuses	90 Amp max	140mm (A) x 126mm (B) x 109mm (C)	10 way mini blade fuse box with cover