



HD30 Series Receptacles

Size 18 Shell

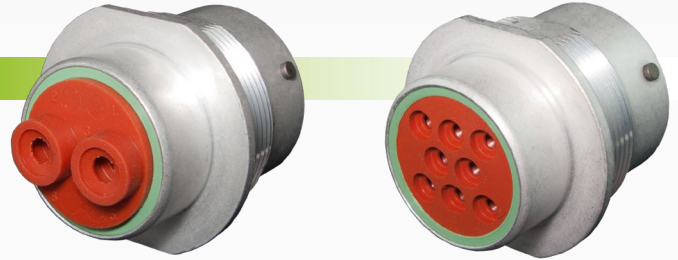
www.te.com

www.qvee.com.au



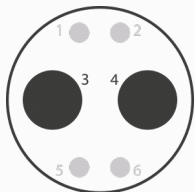
DESCRIPTION

These industry proven connectors are environmentally sealed to IP67 standards. Able to be used in both inline and bulk head applications. Specifically designed for the truck, mining and construction industry.

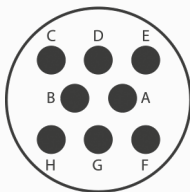


TECHNICAL SPECIFICATIONS

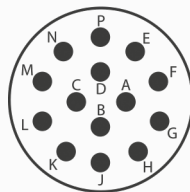
CONFIGURATIONS



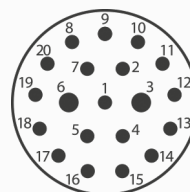
18-6
2 x size 4, 4 x blank



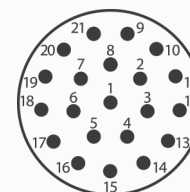
18-8
8 x size 12



18-14
14 x size 16



18-20
2 x size 16, 18 x size 20



18-21
21 x size 20

Amperage Rating:

- Size 20 - 7.5A
- Size 16 - 13A
- Size 12 - 25A
- Size 8 - 60A
- Size 4 - 100A

IP Rating	• IP67 rated
Operating Temperature	• -55 to 125°C

Voltage Rating	• 250 Volt AC / DC
Grommet / Insert Material	• Silicone rubber / unfilled PEI

PART NUMBERS

Part No.	Dimensions	Terminals	Descriptions
HD34-18-6PN	33.76mm x 47.04mm x 44.45mm	2 x size 4 pins, (4 blanks)	6 circuit receptacle. Takes 2 x size 4 pins
HD34-18-8PN	36.49mm x 41.83mm x 44.45mm	8 x size 12 pins	8 circuit receptacle. Takes 8 x size 12 pins
HD34-18-8SN	36.49mm x 41.83mm x 44.45mm	8 x size 12 sockets	8 circuit receptacle. Takes 8 x size 12 sockets
HD34-18-14PN	36.49mm x 41.83mm x 44.45mm	14 x size 16 pins	14 circuit receptacle. Takes 14 x size 16 pins
HD34-18-14SE	36.49mm x 41.83mm x 44.45mm	14 x size 16 sockets	14 circuit receptacle. Takes 14 x 16 sockets. Extra thin walled cable seals
HD34-18-14SN	36.49mm x 41.83mm x 44.45mm	14 x size 16 sockets	14 circuit receptacle. Takes 14 x 16 sockets
HD34-18-20SN	36.49mm x 41.83mm x 44.45mm	2 x size 16 & 18 x size 20 sockets	20 circuit receptacle. Takes 2 x size 16 sockets & 18 x size 20 sockets
HD34-18-21PN	36.49mm x 41.83mm x 44.45mm	21 x size 20 pins	21 circuit receptacle. Takes 21 x size 20 pins