

20" 126W High Powered LED Light Bar

#LEDB126C

www.qvee.com.au



DESCRIPTION

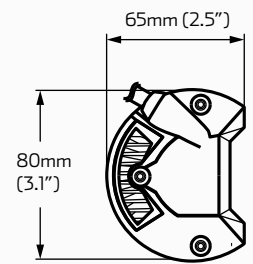
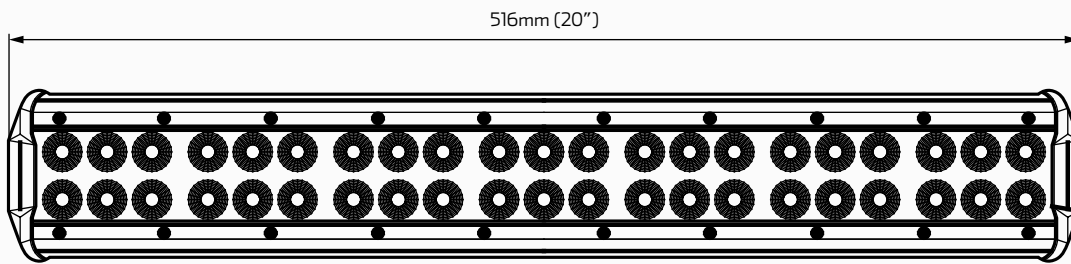
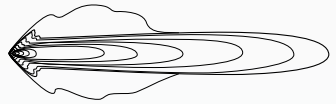
The LEDB126C is a 126W light bar that uses 42 x 3W high powered LED's. Features a rugged design and a virtually unbreakable 60° polycarbonate lens. Approximately 50,000 hours LED lifespan. This light bar is IP67 rated and is EMC approved so there is no electrical interference.

Ideal for Mining, Trucking or the serious 4WD enthusiast who'll be pushing the boundaries of lighting performance. Comes with channel mounting bracket.

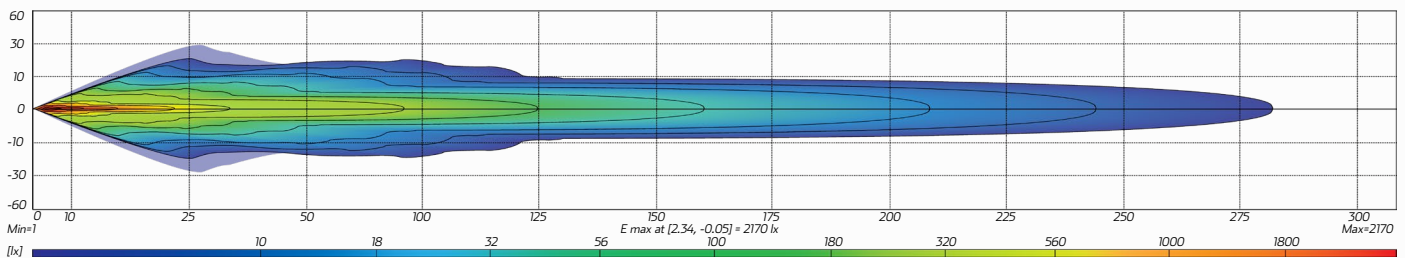
ACCESSORIES

- 1 x Channel Mounting Bracket

COMBO SPOT & FLOOD



BEAM COVERAGE



TECHNICAL SPECIFICATIONS

Voltage	• 10 - 30 Volt
Lumens	• 7,220 Lumens
Wattage	• 126 Watts
Colour Temperature	• 6000 K
LED Count	• 42 x 3W High Powered LED's

Beam Coverage	• Combo Beam
IP Rating	• IP67 Rated
Mounting	• Channel Mount
Lens	• 60° Polycarbonate Lens
Dimensions	• 516mm (20") L x 80mm (3.1") H x 65mm (2.5") D