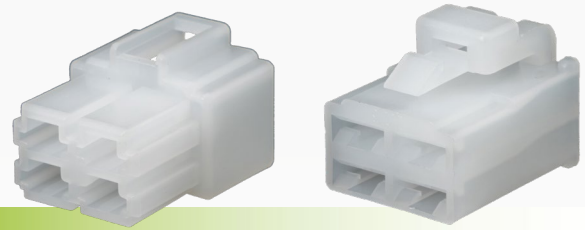




## Reverse QK Type Connector Kits

Complete Kits

www.qvee.com.au



### DESCRIPTION

Complete Reverse QK type connector kits.  
Made from high quality polypropylene.



### TECHNICAL SPECIFICATIONS

<b>Connector System</b>	• Wire to Wire	<b>Body Material</b>	• Polypropylene
<b>Withstanding Voltage</b>	• 250V AC/DC	<b>Terminal Cable Size</b>	• 3 - 4mm automotive cable*
<b>Primary Locking Feature</b>	• Integrated in Housing	<b>Approvals</b>	• RoHS
<b>Circuit Application</b>	• Cable connection		

\*Please refer to 805501BL2 & 804501BL2 for 5-6mm automotive size cable (available separately)

### REVERSE QK CONFIGURATION



1 Circuit



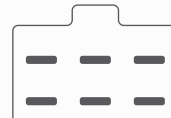
2 Circuits



3 Circuits



4 Circuits



6 Circuits



8 Circuits

### PART NUMBERS

Part Number.	Description	Comprises
QVC1BL	Complete 1 circuit QK connector kit. Suit 3-4mm automotive cable.	1 x 1 circuit female housing (1MA-250), 1 x 1 circuit male housing (1FA-250), 1 x female terminal (804901BL2) and 1 x male terminal (805502BL2).
QVC2BL	Complete 2 circuit QK connector kit. Suit 3-4mm automotive cable.	1 x 2 circuit female housing (2MTA-250), 1 x 2 circuit male housing (2FTA-250), 2 x female terminals (804502BL2) and 2 x male terminals (805502BL2).
QVC3BL	Complete 3 circuit QK connector kit. Suit 3-4mm automotive cable.	1 x 3 circuit female housing (3MA-250), 1 x 3 circuit male housing (3FA-250), 3 x female terminals (804502BL2) and 3 x male terminals (805502BL2).
QVC4BL	Complete 4 circuit QK connector kit. Suit 3-4mm automotive cable.	1 x 4 circuit female housing (4MA-250), 1 x 4 circuit male housing (4FA-250), 4 x female terminals (804502BL2) and 4 x male terminals (805502BL2).
QVC6BL	Complete 6 circuit QK connector kit. Suit 3-4mm automotive cable.	1 x 6 circuit female housing (6MA-250), 1 x 6 circuit male housing (6FA-250), 6 x female terminals (804502BL2) and 6 x male terminals (805502BL2).
QVC8BL	Complete 8 circuit QK connector kit. Suit 3-4mm automotive cable.	1 x 8 circuit female housing (8MA-250), 1 x 8 circuit male housing (8FA-250), 8 x female terminals (804502BL2) and 8 x male terminals (805502BL2).