

## SPST Off/On Rocker Switch

#SR24103

www.qvee.com.au

### DESCRIPTION

SPST Off/On rocker switch with Off/On white writing.  
Push fit design with push on terminals.

Withstand up to 16A @ 12V and 8A @ 24V.

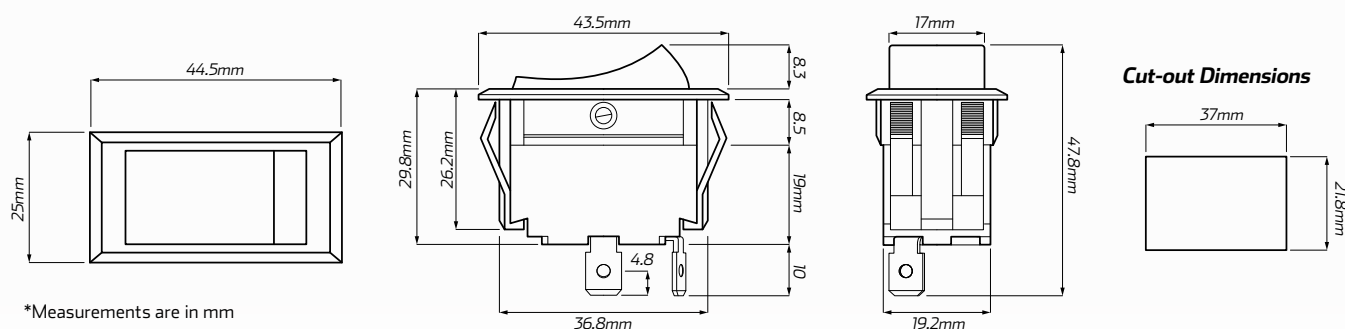
2 blade terminal connection.



### FEATURES

- 2 pin SPST On/Off
- On/Off indicator (white)
- Suitable for 125V AC or 12/24V DC application
- Copper blade terminals connection

### DIMENSIONS



### TECHNICAL SPECIFICATIONS

Function	• SPST On/Off	Body Colour	• Black with On/Off writing
Suitable Voltage	• 125V AC & 12/24V DC applications	Contact Material	• Copper terminals
Amperage @ 12V	• 16 Amp	Switch Dimensions	• 44.5mm L x 25mm W
Amperage @ 24V	• 8 Amp	Cut-out Dimensions	• 37mm L x 21mm W
Body Material	• Plastic	Panel Thickness	• 4.5mm thickness max