

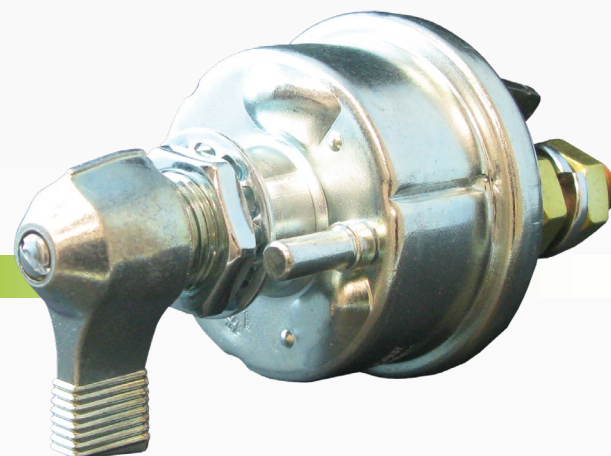


Cole Hersee Co.

Heavy Duty Lever Type Isolator Switch

#75907B

www.colehersee.com.au



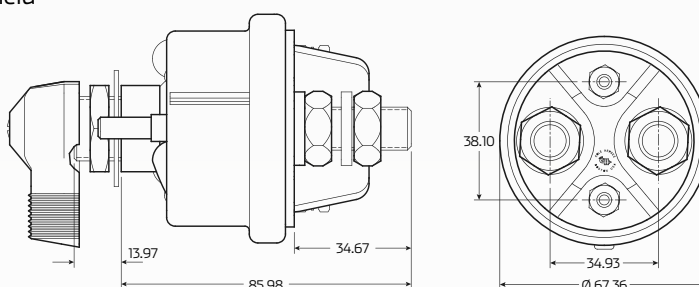
DESCRIPTION

DPST heavy duty on/off battery isolator switch with indexing post.

6-36V, 300A continuous, 2000A intermittent. Features silver contacts with chrome lever, weather resistant O'ring seal on mounting shaft. 3/4" mounting stem. Small terminals 20A @ 12V.

FEATURES

- Disconnects the battery and the alternator or generator field
- Indexing pin aligns switch and prevents rotation
- DPST configuration
- Weather resistant, O-ring sealed
- Silver contacts. Chrome lever
- Field terminals 20 Amp continuous
- Suits panel thickness to 6.5mm
- Mounting stem 3/4" - 24 thread, L 13mm
- 2 x field stud 10 - 32, 2 x battery stud 1/2" - 20



*All measurements are in mm

TECHNICAL SPECIFICATIONS

Voltage	• 6 - 36V multi-volt
Maximum Amperage	• 2000A Intermittent
Continuous Amperage	• 300A continuous
Field Terminals Amperage	• Field terminals 20A continuous
Configuration	• DPST
Dimensions	• 110mm x 67mm Ø
Contact Material	• Silver contacts

Housing Material	• Steel plated casing, chrome lever
Field Studs Size	• 2 x studs 10 - 32
Battery Studs Size	• 2 x studs 1-2" - 20
Stud Torque	• 4.4 to 7.4 ft lbs (6-10 Nm)
Operating Temperature	• -40°C to 85°C
Mounting Stem	• 3/4" - 24 thread, L 13mm
Weatherproof	• Yes, O-ring sealed