

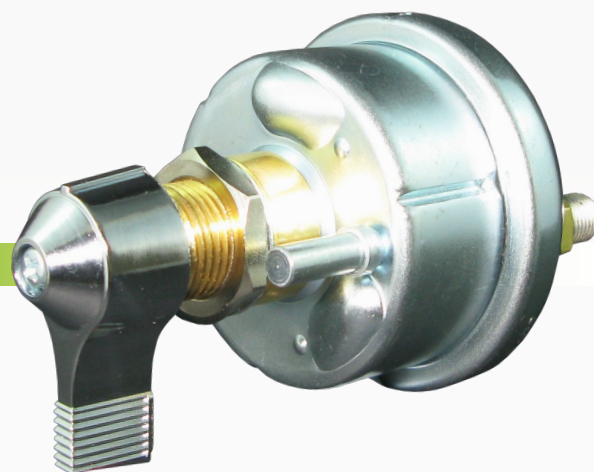
Lever Type Isolator Switch with Auxiliary Contacts

#BI75910

www.qvee.com.au

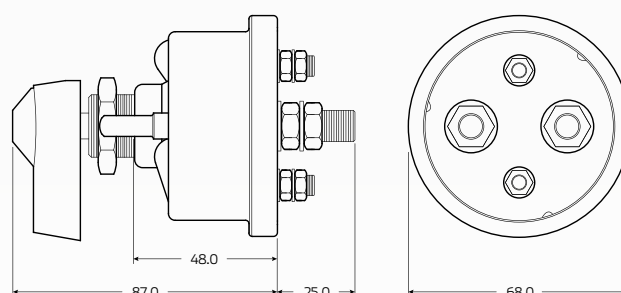
DESCRIPTION

DPST on/off battery isolator switch with auxiliary contacts.
6-36V, 300A continuous, 1000A intermittent.
Features silver contacts with metal lever, weather resistant.
Suits panel thickness to 6.5mm. Auxilliary contacts at 20A.



FEATURES

- Disconnects the battery and the alternator or generator field
- Lockable with Locksafe's LS11004 and QVEE's QVBILO4 isolator lockouts (not supplied)
- 6 - 36V multi-volt
- DPST configuration
- Silver alloy contacts, metal lever
- Weather resistant
- Suits panel thickness to 6.5mm
- 20A continuous auxiliary contacts



*All measurements are in mm

TECHNICAL SPECIFICATIONS

Voltage	• 6 - 36V multi-volt
Maximum Amperage	• 1000A Intermittent
Continuous Amperage	• 300A continuous
Auxiliary Amperage	• Auxiliary Contacts 20A continuous
Configuration	• DPST
Dimensions	• 112mm x 68mm Ø
Contact Material	• Silver alloy contacts

Housing Material	• Steel housing, steel lever
Field Stud Size	• 2 x studs 10 - 32
Battery Stud Size	• 2 x studs 3/8" - 24
Panel Thickness	• 6.5mm panel thickness
Lever Radius	• 19mm Ø (lever), 6mm Ø (hole)
Weatherproof	• Yes