



www.te.com

## DTP Series 4 Circuit Flange Mount Deutsch Connector Kit

#DTP4FL-KIT

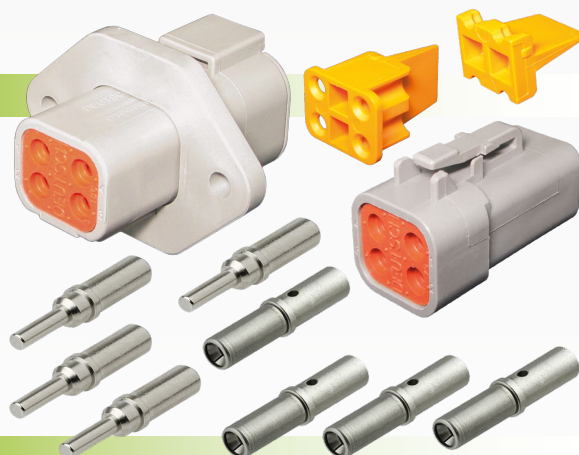
www.qvee.com.au



### DESCRIPTION

4 circuit DTP series Deutsch connector kit with flange mount.

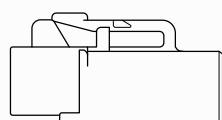
Suitable for application requiring 25A per circuit. Deutsch DTP Series are environmentally sealed connectors, specifically designed for cable to cable applications on the engine or transmission, under the hood, on the chassis or in the cab. Where even a small degradation & signal level in connection may be critical, the DTP Series heavy duty connectors will provide reliability and performance.



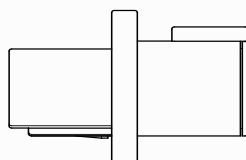
### FEATURES

- Accept contact size 12 (5mm auto cable)
- Thermoplastic housing
- Integrated latch for mating, easy to install
- Compact and environmentally sealed to IP68 standard

### DIMENSIONS



18.59mm W x 18.06mm H x 34.65mm L  
DTP06-2S



53.34mm W x 38.1mm H x 47.27mm L  
DTP04-4P-L012

### COMPONENTS

Part No.	Description
DTP04-4P-L012	• 4 circuit DTP series receptacle housing
WP4P	• 4 circuit pin wedge to suit
P12/1	• 4 size 12 male pins. Takes 5mm auto cable
DTP06-4S	• 4 circuit DTP series plug housing
WP4S	• 4 circuit socket wedge to suit
S12/1	• 4 size 12 female sockets. Takes 5mm auto cable

### TECHNICAL SPECIFICATIONS

Operating Temperature	• -55° C to 125° C	Flammability Rating	• 20mm flame test, UL-94 standard
Amperage	• 25 Amps per circuit	Durability Resistance	• No damage after 100 re-engagement
Voltage	• 250V AC/DC	Dielectric Withstand	• Less than 2mA @ 1500V AC
Connector System	• Wire to wire	Insulation Resistance	• 1000 Megaohms min @ 25° C
Body Material	• PA GF	Moisture Resistance	• 3 feet immersion with proper wiring
Primary Locking Feature	• Integrated in housing	Vibration Resistance	• No mechanical / physical damage @ 20Gs rms at 10 to 2000Hz
IP Rating	• IP68 rated		