

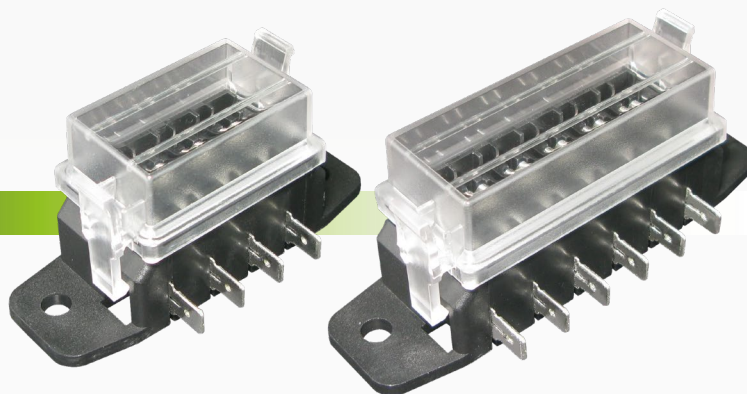
ATO Blade Fuse Boxes

#FB10

www.qvee.com.au

DESCRIPTION

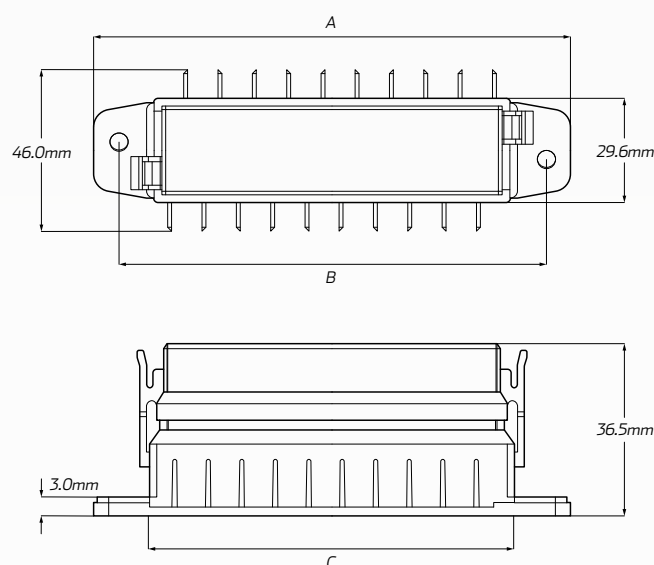
Fuse box to suit standard (ATO) blade fuses. Features a transparent cover and 6.3mm blade terminal connections. Amperage rating of 15 Amps per circuit.



TECHNICAL SPECIFICATIONS

- Maximum voltage of 32V DC
- Fuses are not included
- Bronze tin plated terminals
- Available in 4/6/8/10 circuit
- Nylon PA 66 Fibre base with polycarbonate cover

DIMENSIONS



Please refer to table below for full measurements

Voltage	• 32 Volt DC max
Current Rating	• 15A per circuit
Base Material	• Nylon PA 66 + 15% fibre
Base Colour	• Black
Cover Material	• Clear polycarbonate (included)
Contact Material	• Phosphor bronze tin plated (6.3mm)
Terminals to Suit	• Standard (ATO) blade fuses (not included)

PART NUMBERS

Part Number	No. of Fuses	Max. Current (Block)	Dimensions (A x B x C)	Descriptions
FB1004	4 fuses	30 Amp max	80mm (A) x 65mm (B) x 49mm (C)	4 way standard blade fuse box with cover
FB1006	6 fuses	45 Amp max	100mm (A) x 85mm (B) x 69mm (C)	6 way standard blade fuse box with cover
FB1008	8 fuses	60 Amp max	120mm (A) x 105mm (B) x 89mm (C)	8 way standard blade fuse box with cover
FB1010	10 fuses	90 Amp max	140mm (A) x 126mm (B) x 109mm (C)	10 way standard blade fuse box with cover