



www.te.com

HD10 Series Receptacle with Flange Mount

Sold Individually

www.qvee.com.au

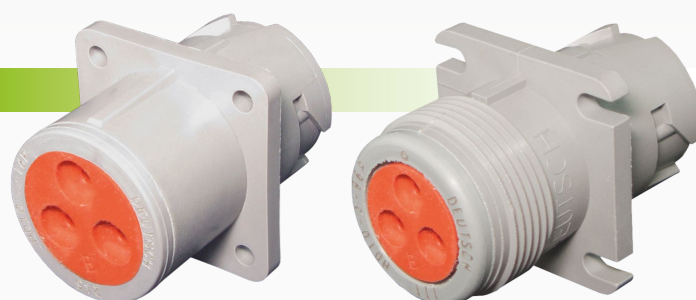


DEUTSCH
is now



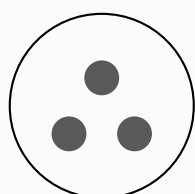
DESCRIPTION

These industry proven connectors are sealed to IP68 standards. Equipped with thermoplastic housing and silicon rubber seals, perfect for harsh environments. Takes size 16 pins. Rated at 13 Amps per circuit.

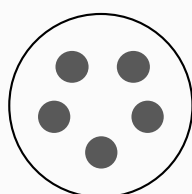


TECHNICAL SPECIFICATIONS

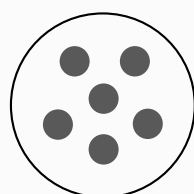
CONFIGURATIONS



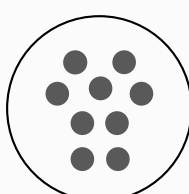
3-16/3-96
3 size 16



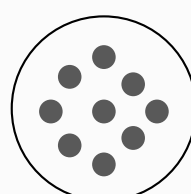
5-16
5 size 16



6-96
6 size 16



9-16
9 size 16



9-96
9 size 16

Threading:

- X-16: Non threaded rear
- X-96: Threaded rear

IP Rating	• IP68 rated
Operating Temperature	• -55 to 125°C

Voltage Rating	• 250 Volt DC
Flammability Rating	• UL 94V-1

PART NUMBERS

Part Number.	Dimensions (mm)	Terminals	Threaded	Descriptions
HD10-3-96P	• 29.57 W x 41.63 H x 29.57 L	• 3 x size 16	• Yes	• 3 circuit HD10 flange mount receptacle with thread. Takes pins
HD10-5-16P	• 32.31 W x 41.63 H x 32.31 L	• 5 x size 16	• No	• 5 circuit HD10 flange mount receptacle. Takes pins
HD10-6-96P	• 38.94 W x 41.58 H x 38.94 L	• 6 x size 16	• Yes	• 6 circuit HD10 flange mount receptacle with thread. Takes pins
HD10-9-16P	• 36.5 W x 41.63 H x 36.5 L	• 9 x size 16	• No	• 9 circuit HD10 flange mount receptacle. Takes pins
HD10-9-96P	• 32.49 W x 42.18 H x 36.5 L	• 9 x size 16	• Yes	• 9 circuit HD10 flange mount receptacle with thread. Takes pins