

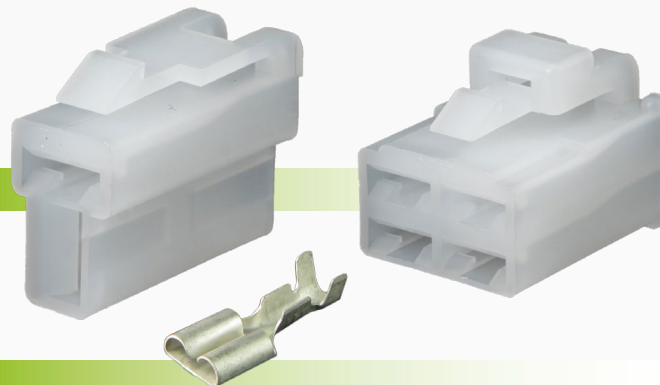
## Reverse QK Type Plugs

Packs of 10

www.qvee.com.au

### DESCRIPTION

Reverse QK type receptacle plug kit.  
Comes with female terminals. Packs of 10.



### TECHNICAL SPECIFICATIONS

<b>Connector System</b>	• Wire to Wire	<b>Body Material</b>	• Polypropylene
<b>Withstanding Voltage</b>	• 250V AC/DC	<b>Terminal Cable Size</b>	• 3 - 4mm automotive cable*
<b>Primary Locking Feature</b>	• Integrated in Housing	<b>Approvals</b>	• RoHS
<b>Circuit Application</b>	• Cable connection		

\*Please refer to 804501BL2 for 5-6mm automotive size cable (available separately)

### REVERSE QK CONFIGURATION



1 Circuit



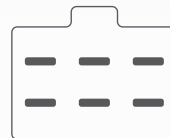
2 Circuits



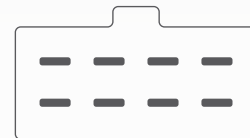
3 Circuits



4 Circuits



6 Circuits



8 Circuits

### PART NUMBERS

Part Number.	Description	Comprises
<b>QVC1M10</b>	Complete 1 circuit male housing kit. Suit 3-4mm automotive cable.	10 x 1 circuit reverse male housing (1FA-250), 10 x female terminal (804901BL2).
<b>QVC2M10</b>	Complete 2 circuit male housing kit. Suit 3-4mm automotive cable.	10 x 2 circuit reverse male housing (2FTA-250), 20 x female terminal (804502BL2).
<b>QVC3M10</b>	Complete 3 circuit male housing kit. Suit 3-4mm automotive cable.	10 x 3 circuit reverse male housing (3FA-250), 30 x female terminal (804502BL2).
<b>QVC4M10</b>	Complete 4 circuit male housing kit. Suit 3-4mm automotive cable.	10 x 4 circuit reverse male housing (4FA-250), 40 x female terminal (804502BL2).
<b>QVC6M10</b>	Complete 6 circuit male housing kit. Suit 3-4mm automotive cable.	10 x 6 circuit reverse male housing (6FA-250), 60 x female terminal (804502BL2).
<b>QVC8M10</b>	Complete 8 circuit male housing kit. Suit 3-4mm automotive cable.	10 x 8 circuit reverse male housing (8FA-250), 80 x female terminal (804502BL2).