

Copper Seam Battery Cable Lugs

Sold in Packs of 10

www.qvee.com.au



DESCRIPTION

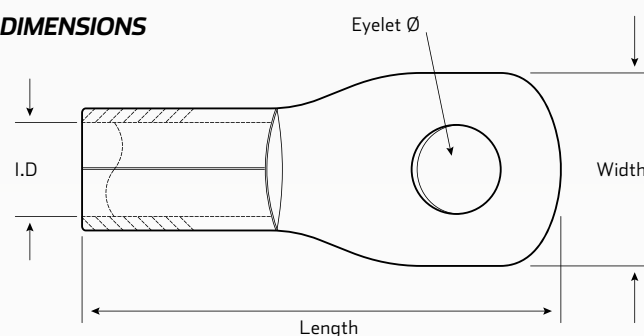
QVEE's copper cable lugs are of the highest quality and are manufactured from 99.9% copper to give you the best conductivity.

They have a continuous operating temperature of 155° C.

TECHNICAL SPECIFICATIONS

Material	• 99.9% copper
Operating Temperature	• Up to 155°C

DIMENSIONS



PART NUMBERS

Part No.	Internal Diameter	Eyelet Size	Cable Size	Dimensions	Description
CSL8-5	• 4.5mm	• 5mm	• 8B&S (10mm²)	• 29.8mm L x 15mm W	• Copper seam battery cable lugs with 5mm eyelet, suits 8B&S cable
CSL8-6		• 6mm		• 29.8mm L x 15mm W	• Copper seam battery cable lugs with 6mm eyelet, suits 8B&S cable
CSL8-8		• 8mm		• 29.8mm L x 15mm W	• Copper seam battery cable lugs with 8mm eyelet, suits 8B&S cable
CSL8-10		• 10mm		• 29.8mm L x 15mm W	• Copper seam battery cable lugs with 10mm eyelet, suits 8B&S cable
CSL8-12		• 12mm		• 33.5mm L x 20mm W	• Copper seam battery cable lugs with 12mm eyelet, suits 8B&S cable
CSL14-5	• 5.8mm	• 5mm	• 6B&S (16mm²)	• 29.8mm L x 12mm W	• Copper seam battery cable lugs with 5mm eyelet, suits 6B&S cable
CSL14-6		• 6mm		• 29.8mm L x 12mm W	• Copper seam battery cable lugs with 6mm eyelet, suits 6B&S cable
CSL14-8		• 8mm		• 32.8mm L x 16mm W	• Copper seam battery cable lugs with 8mm eyelet, suits 6B&S cable
CSL14-10		• 10mm		• 32.8mm L x 16mm W	• Copper seam battery cable lugs with 10mm eyelet, suits 6B&S cable
CSL14-12		• 12mm		• 41mm L x 22mm W	• Copper seam battery cable lugs with 12mm eyelet, suits 6B&S cable
CSL22-6	• 7.7mm	• 6mm	• 3B&S (25mm²)	• 33.7mm L x 12.2mm W	• Copper seam battery cable lugs with 6mm eyelet, suits 3B&S cable
CSL22-8		• 8mm		• 33.7mm L x 16.5mm W	• Copper seam battery cable lugs with 8mm eyelet, suits 3B&S cable
CSL22-10		• 10mm		• 33.7mm L x 16.5mm W	• Copper seam battery cable lugs with 10mm eyelet, suits 3B&S cable